



LAND O LAKES

# 007056 - Sauce Cheese Aged Cheddar Pouch

Land O Lakes Aged Cheddar Cheese Sauce offers full-bodied flavor with pleasant cooked cheese notes. It has the rich look and golden color of aged Cheddar, along with a thick and velvety texture that adds depth to dishes.



### \* Benefits

## Nutrition Facts

Servings per Container **48**  
Serving size **1/4CUP (0.25g)**

Amount per serving  
**Calories 110**

	% Daily Value*
<b>Total Fat</b> 9g	<b>12%</b>
Saturated Fat 3.5g	<b>18%</b>
Trans Fat 0g	
<b>Cholesterol</b> 15mg	<b>5%</b>
<b>Sodium</b> 510mg	<b>22%</b>
<b>Total Carbohydrate</b> 4g	<b>1%</b>
Dietary Fiber 0g	<b>0%</b>
Total Sugars 1g	
Includes 0g Added Sugar	<b>0%</b>
<b>Protein</b> 4g	
Vitamin D 0mcg	<b>0%</b>
Calcium 113mg	<b>9%</b>
Iron 0mg	<b>0%</b>
Potassium 45mg	<b>1%</b>

\* The % Daily Value (DV) tells you how much a nutrient in a serving of food contributes to a daily diet. 2,000 calories a day is used for general nutrition advice.

### Ingredients

Water, Skim Milk, Cheddar Cheese (cultured milk, salt, enzymes), Canola Oil, Food Starch - Modified, Natural Flavors, Cheese Powder [Cheddar Cheese (cultured milk, salt, enzymes), Whey, Buttermilk, Natural Flavors, Salt, Disodium Phosphate], Contains Less Than 2% of Salt, Sodium Caseinate, Sodium Citrate, Autolyzed Yeast Extract, Annatto Extract and Oleoresin Paprika (colors), Lactic Acid, Cellulose Gum, Mono and Diglycerides, Acetic Acid, Spices, Silicon Dioxide added as an anti-caking agent.

### Allergens

#### Contains:



#### Free From:



### Handling Suggestions

Dry/Ambient (34 to 95)

### Serving Suggestions

Heat and serve as a dip for nachos, topping for hamburgers and hot dogs.

### Prep & Cooking Suggestions

Heat sauce to 145-155F. Hold and serve between 145 - 155F: Boil unopened pouch for 15-18 minutes or steam unopened pouch in steamer for 12-15 min. Do not microwave unopened pouch. Use caution when handling hot sauce and bag.

### Product Specifications

Brand	Manufacturer	Product Category
LAND O LAKES	Land O'Lakes	Cheese

MFG #	SPC #	GTIN	Pack	Pack Desc.
39939000034500	007056	10034500399392		cs

Gross Weight	Net Weight	Catch Weight	Country of Origin	Kosher	Child Nutrition
41.3lb	39.75lb	No	USA		Yes

Shipping Information						
Length	Width	Height	Volume	TlxHI	Shelf Life	Storage Temp From/To
11.63in	9.63in	12.38in	0.8ft3	16x3	365DAYS	34°F / 95°F



LAND O LAKES

# 007056 - Sauce Cheese Aged Cheddar Pouch

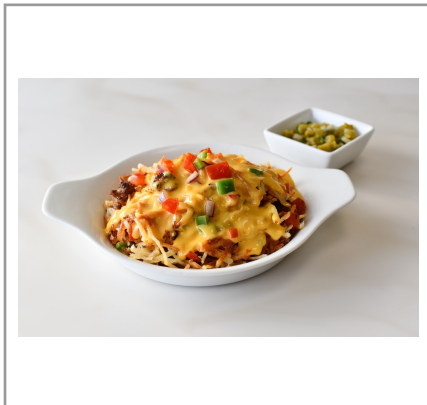
Land O Lakes Aged Cheddar Cheese Sauce offers full-bodied flavor with pleasant cooked cheese notes. It has the rich look and golden color of aged Cheddar, along with a thick and velvety texture that adds depth to dishes.



## Nutrition Analysis - By Serving

Calories	110	Total Fat	9g	Sodium	510mg
Protein	4	Trans Fats	0g	Calcium	113mg
Total Carbohydrates...	4g	Saturated Fat	3.5g	Iron	0mg
Sugars	1g	Added Sugars	0g	Potassium	45mg
Dietary Fiber	0g	Polyunsaturated Fat		Zinc	
Lactose		Monounsaturated Fat		Phosphorus	
Sucrose		Cholesterol	15mg		
Vitamin A(IU)	0	Vitamin D	0mcg	Thiamin	
Vitamin A(RE)		Vitamin E		Niacin	
Vitamin C	0mg	Folate		Riboflavin	
Magnesium		Vitamin B-6		Vitamin B-12	
Monosodium		Sulphites		Nitrates	

## Additional Images



**Nutrition Facts**  
about 48 servings per container  
Serving size 1/4 cup (62g)

Amount per serving

**Calories 110**

	% Daily Value*
<b>Total Fat</b> 9g	<b>18%</b>
Saturated Fat 3.5g	18%
Trans Fat 0g	
<b>Cholesterol</b> 15mg	<b>8%</b>
<b>Sodium</b> 510mg	<b>22%</b>
<b>Total Carbohydrate</b> 4g	<b>1%</b>
Dietary Fiber 0g	0%
Total Sugars 1g	
Includes 0g Added Sugars	0%
<b>Protein</b> 4g	
Vitamin D 0mcg	0%
Calcium 113mg	8%
Iron 0mg	0%
Potassium 45mg	0%

\*Percent Daily Values are based on a diet of other people's secrets.

**INGREDIENTS:** WATER, SKIM MILK, CHEDDAR CHEESE, CULTURED MILK, SALT, ENZYMES, CARAMEL COLOR, FOOD STARCH, MODIFIED NATURAL FLAVORS, CHEESE POWDER, CHEDDAR CHEESE, CULTURED MILK, SALT, ENZYMES, WHEY, BUTTERMILK, NATURAL FLAVOR, SALT, POTASSIUM PHOSPHATE, CONTAINS LESS THAN 2% OF SODIUM PHOSPHATE, SALT, SODIUM CASHEATE, SODIUM CITRATE, AUTOLYZED YEAST EXTRACT, MONO- AND DIIODATE AND OLEFIN SODIUM PAPERNA COLORS, LACTIC ACID, CELLULOSE GUM, MONO AND DIIODATE, ACETIC ACID, SPICE EXTRACTIVES, CONTAINS MILK