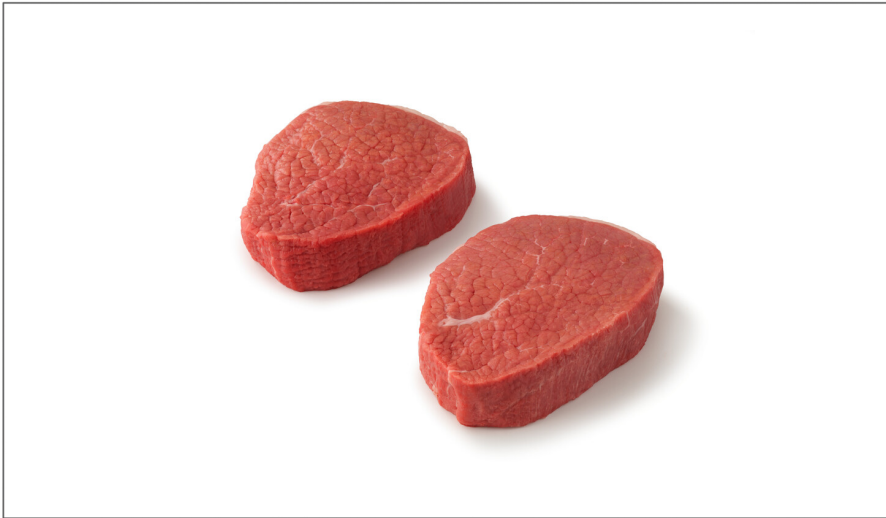




SWIFT

051132 - Beef Frz Eye Of Round Bnls S/T 4671

CARCASS SELECTION
Cattle Source: Certified Program
AMS G-70 G.F. Swift 1855 Black Angus Beef
Cattle Type: Mixed Steers &/Or Heifers
Cattle Age: Under 30 Months of Age



* Benefits

Nutrition Facts

Servings per Container 270
Serving size Single Serving (4oz)

Amount per serving
Calories 140

	% Daily Value*
Total Fat 4g	6%
Saturated Fat 1.5g	7%
Trans Fat 0g	
Cholesterol 65mg	21%
Sodium 60mg	2%
Total Carbohydrate 0g	0%
Dietary Fiber 0g	0%
Total Sugars 0g	
Includes 0g Added Sugars	0%
Protein 26g	
Vitamin D 0µg	0%
Calcium 0mg	0%
Iron 0mg	0%
Potassium 0mg	0%

* The % Daily Value (DV) tells you how much a nutrient in a serving of food contributes to a daily diet. 2,000 calories a day is used for general nutrition advice.

Ingredients

Beef

Allergens

Free From:

- crustaceans
- shellfish
- mollusks
- eggs
- fish
- milk
- peanuts
- sesame
- soy
- tree nuts
- wheat

Handling Suggestions

PACKAGING INFORMATION
Vacuum Bag: Standard Shrink
9 W X 22 L
Bag Brand: 1855 Black Angus Beef
Graded Bag: Ungraded
Pkg Arrangement: Layer Pack
Pkg Per Layer: 6
1). In bag - long-ways. 2). In box - sideways. 3). 2 layers of 6 bags.

Serving Suggestions

4 oz

Prep & Cooking Suggestions

Procedure
A. Starting with a bottom round, remove the heel and associated fat.
B. Remove the artery, oyster meat, loose lean and fat from the belly of the flat.
C. Trim the belly to specification.
D. Separate the flat and eye along the natural seam being careful not to score either one.
E. Trim the external fat to specification.
F. Remove any adjacent muscle to specification.
G. Trim any scores or ragged edges to specification.
H. Remove all grading/markings ink of any color.
Finished Product Trimming

Product Specifications

Brand	Manufacturer	Product Category
SWIFT	JBS USA, LLC - Beef	Beef

MFG #	SPC #	GTIN	Pack	Pack Desc.
46713	051132	90076338467139	12	12 / 1 / 5.63 LBR

Gross Weight	Net Weight	Catch Weight	Country of Origin	Kosher	Child Nutrition
67.5lb	67.5lb	Yes	USA	No	No

Shipping Information						
Length	Width	Height	Volume	TlxHI	Shelf Life	Storage Temp From/To
23.63in	15.88in	9.13in	1.98ft3	5x7	42DAYS	28°F / 38°F



SWIFT

051132 - Beef Frz Eye Of Round Bnls S/T 4671

CARCASS SELECTION
Cattle Source: Certified Program
AMS G-70 G.F. Swift 1855 Black Angus Beef
Cattle Type: Mixed Steers &/Or Heifers
Cattle Age: Under 30 Months of Age



Nutrition Analysis - By Serving

Calories	140kcal	Total Fat	4g	Sodium	60mg
Protein	26g	Trans Fats	0g	Calcium	0mg
Total Carbohydrates...	0g	Saturated Fat	1.5g	Iron	0mg
Sugars	0g	Added Sugars	0g	Potassium	0mg
Dietary Fiber	0g	Polyunsaturated Fat		Zinc	
Lactose		Monounsaturated Fat		Phosphorus	
Sucrose		Cholesterol	65mg		
Vitamin A(IU)	0NIU	Vitamin D	0µg	Thiamin	
Vitamin A(RE)		Vitamin E		Niacin	
Vitamin C	0mg	Folate		Riboflavin	
Magnesium		Vitamin B-6		Vitamin B-12	
Monosodium		Sulphites		Nitrates	

Additional Images

