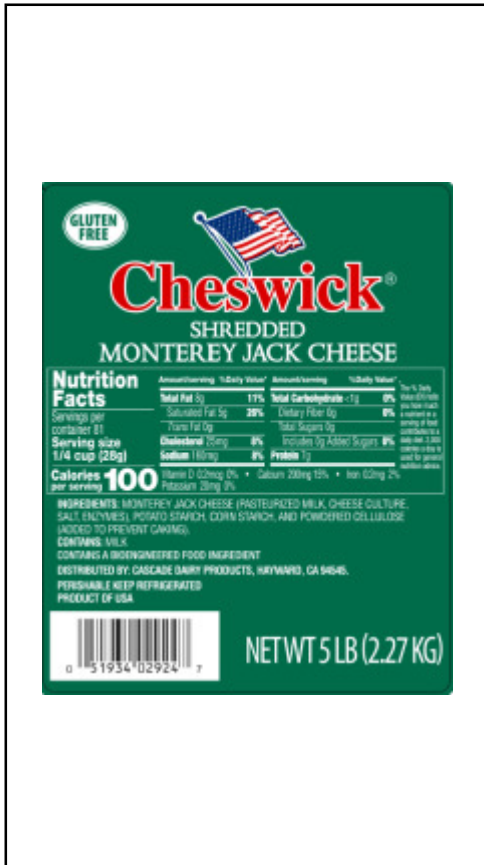




PACIFIC CHEESE CO., INC.  
 21090 CABOT BLVD.  
 HAYWARD, CA 94545  
 PHONE: (510) 784-8800 - FAX: (510) 784-8846

## 4/5# JACK REG SHRED CHESWICK CONFIDENTIAL



PC Code: 02924  
 UPC Code: 051934029247  
 GTIN Code: 10051934029244

Regulatory Statement: This product is processed and packed in accordance with the Food and Drug Administration and meets all Food, Drug, and Cosmetic Act Guidelines.

Texture: Firm, smooth, some slight mechanical openness allowed.

Flavor: A clean, mild, balanced dairy flavor with no off or rancid odors.

Dimensions LxWxH: 2.00 x 0.13 x 0.13

Net Weight: 2267 g

Weight Range: 2,205-2,331.96 g

Shelf Life: 150 days maintain product at 33-40F

Melt: A Complete Melt

Color: NCI 1 - 3

| Nutrition Facts        |                |      |
|------------------------|----------------|------|
| Servings per container |                |      |
| <b>Serving Size</b>    | <b>28 g</b>    |      |
| Amount per Serving     |                |      |
| <b>Calories</b>        | <b>100</b>     |      |
|                        | % Daily Value* |      |
| Total Fat              | 8 g            | 11 % |
| Saturated Fat          | 5 g            | 27 % |
| Trans Fat              | 0 g            |      |
| Cholesterol            | 25 mg          | 8 %  |
| Sodium                 | 170 mg         | 7 %  |
| Total Carbohydrate     | 0 g            | 0 %  |
| Dietary Fiber          | 0 g            | 0 %  |
| Sugars                 | 0 g            |      |
| Added Sugars           | 0 g            | 0 %  |
| <b>Protein</b>         | <b>7 g</b>     |      |
| Vitamin D              | 0.2 mcg        | 0 %  |
| Calcium                | 210 mg         | 15 % |
| Iron                   | 0.2 mg         | 2 %  |
| Potassium              | 20 mg          | 0 %  |

| 100g Nutrition Facts   |                |      |
|------------------------|----------------|------|
| Servings per container |                |      |
| <b>Serving Size</b>    | <b>100 g</b>   |      |
| Amount per Serving     |                |      |
| <b>Calories</b>        | <b>373</b>     |      |
|                        | % Daily Value* |      |
| Total Fat              | 30 g           | 39 % |
| Saturated Fat          | 19 g           | 95 % |
| Trans Fat              | 1 g            |      |
| Cholesterol            | 89 mg          | 30 % |
| Sodium                 | 600 mg         | 26 % |
| Total Carbohydrate     | 1 g            | 0 %  |
| Dietary Fiber          | 0 g            | 0 %  |
| Sugars                 | 1 g            |      |
| Added Sugars           | 0 g            | 0 %  |
| <b>Protein</b>         | <b>24 g</b>    |      |
| Vitamin D              | 0.6 mcg        | 3 %  |
| Calcium                | 746 mg         | 57 % |
| Iron                   | 0.72 mg        | 4 %  |
| Potassium              | 81 mg          | 2 %  |

### CODE DATE FORMATS

Seam Code: N/A  
 Product Code: PACK ON (MM/DD/YY)(LOT#)(PLANT#)(PC LINE)(TIME)  
 Case Label: 02924 4/5# CHES JACK CHEESE REG  
 Case Code: PACK ON (MM/DD/YY)(TIME)(COUNT)(LOT#)(PLANT#)

### CASE INFORMATION

|               |                         |                |          |
|---------------|-------------------------|----------------|----------|
| Dimensions:   | 11.250 x 9.000 x 14.125 | Pack:          | 4 / 5.00 |
| Gross Weight: | 21.5                    | Cases/Layer:   | 17       |
| Net Weight:   | 20.00                   | Layers/Pallet: | 5        |
| Cube:         | 0.8300                  | Cases/Pallet:  | 85       |

### CHEMICAL STANDARDS

|           |            |
|-----------|------------|
| Moisture  | < 44.0%    |
| Fat (FDB) | > 50.0%    |
| Salt      | 1.4 - 2.0% |
| pH        | 5.0 - 5.4  |

### MICROBIOLOGICAL STANDARDS

|               |                   |
|---------------|-------------------|
| Yeast & Mold  | < 100 cfu/g       |
| Coliform      | < 100 cfu/g       |
| Salmonella sp | negative cfu/375g |
| E.coli        | < 10 cfu/g        |
| Listeria sp   | negative cfu/25g  |
| Staph. Coag+  | < 10 cfu/g        |

**This product is classified as a Dairy Allergen.**

### Ingredient Statement

MONTEREY JACK CHEESE (PASTUERIZED MILK, CHEESE CULTURE, SALT, ENZYMES),

Potato Starch, Corn Starch, Powdered Cellulose (added to prevent caking).

Approved By:

Corporate QA

Signature:

Date: